

Beit T'Shuvah Awarded Behavioral Health Care Accreditation From the Joint Commission



PRESS RELEASE - JUL 30, 2015

Beit T'Shuvah, a residential treatment center, earned The Joint Commission's Gold Seal of Approval for Behavioral Health Care Accreditation reflecting its commitment to providing safe and effective care.

Beit T'Shuvah has earned The Joint Commission's Gold Seal of Approval® for Behavioral Health Care Accreditation by demonstrating continuous compliance with its performance standards. The Gold Seal of Approval® is a symbol of quality that reflects an organization's commitment to providing safe and effective care.

Beit T'Shuvah underwent a rigorous on-site survey in July 2015. During the review, compliance with behavioral health care standards related to several areas, including care, treatment, and services; environment of care; leadership; and screening procedures for the early detection of imminent harm was evaluated. On-site observations and interviews also were conducted.

Established in 1969, The Joint Commission's Behavioral Health Care Accreditation program currently accredits more than 2,100 organizations for a three-year period. Accredited organizations provide treatment and services within a variety of settings across the care continuum for individuals who have mental health, addiction, eating disorder, intellectual/developmental disability, and/or child-welfare related needs.

"Joint Commission accreditation provides behavioral health care organizations with the processes needed to improve in a variety of areas related to the care of individuals and their families," said Tracy Griffin Collander, LCSW, Executive Director of the Behavioral Health Care Accreditation program at The Joint Commission. "We commend Beit T'Shuvah for its efforts to elevate the standard of care it provides and to instill confidence in the community it serves."

"Beit T'Shuvah is pleased to receive Behavioral Health Care Accreditation from The Joint Commission, the premier health care quality improvement and accrediting body in the nation," added Rabbi Mark Borovitz, CEO of Beit T'Shuvah. "Staff from across the organization continue to work together to develop and implement approaches and strategies that have the potential to improve care for those in our community."

"We commend Beit T'Shuvah for its efforts to elevate the standard of care it provides and to instill confidence in the community it serves."

TRACY GRIFFIN COLLANDER,
LCSW, EXECUTIVE DIRECTOR OF
THE BEHAVIORAL HEALTH CARE
ACCREDITATION PROGRAM AT
THE JOINT COMMISSION

The Joint Commission's behavioral health care standards are developed in consultation with health care experts and providers, quality improvement measurement experts, and individuals and their families. The standards are informed by scientific literature and expert consensus to help organizations measure, assess and improve performance.

Beit T'Shuvah (Bate-t'shoo-vah)

[Beit T'Shuvah](#) is a nonprofit treatment center dedicated to guiding individuals and families toward a path of living well in order to recover from addiction. Beit T'Shuvah, meaning House of Return in Hebrew, became the first residential program in the United States to integrate Judaism, 12 steps and psychotherapy. It evolved from the original half-way house model to a nationally recognized faith-based recovery community on a large campus housing 140 residents and 100 employees (80 percent of whom are former residents). Through charitable donations Beit T'Shuvah continues to provide treatment to people who have limited or no financial resources. Learn more at www.beittshuvah.org.

The Joint Commission

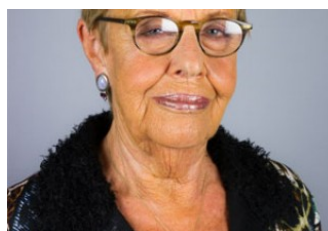
Founded in 1951, [The Joint Commission](#) seeks to continuously improve health care for the public, in collaboration with other stakeholders, by evaluating health care organizations and inspiring them to excel in providing safe and effective care of the highest quality and value. The Joint Commission accredits and certifies nearly 21,000 health care organizations and programs in the United States. An independent, nonprofit organization, The Joint Commission is the nation's oldest and largest standards-setting and accrediting body in health care. Learn more at www.jointcommission.org.

Contact: Rabbi Mark Borovitz, CEO 310-204-5200 EXT 211 RBorovitz@BeitTShuvah.org

Additional Links

- [Beit T'Shuvah.org](http://BeitTShuvah.org)
- [Follow Beit T'Shuvah Facebook](#)

Additional Images



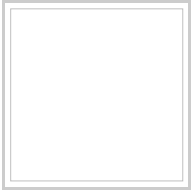
☰ Categories:

[Mental Health](#), [Addiction](#), [Healthcare](#)

♥ Tags:

[addiction](#), [Behavioral Health](#), [Beit T'Shuvah](#), [faith-based treatment](#), [Gold Seal](#), [Harriet Rossetto](#), [Mark Borovitz](#), [Rabbi Mark Borovitz](#), [The Joint](#)

Company **Contact Information**



Beit T'Shuvah

Original Source: www.newswire.com